



2 Inch 1 2" 1 4 Stainless Steel Beam Clamps For Threaded Rod Stairs Type

Our Product Introduction

for more products please visit us on channel-fittings.com

Basic Information

- Place of Origin: Jiangsu, China
- Brand Name: Hengtong
- Model Number: BC-38
- Minimum Order Quantity: 500 pieces
- Price: \$1.00 - \$4.60/pieces
- Packaging Details: Usual packages or packed as per customers' requirements
- Supply Ability: 10000 Piece/Pieces per Week



Product Specification

- Material: Malleable Iron
- Standard Or Nonstandard: Standard
- Usage: Heavy Duty
- Structure: Saddle Clamp
- Certificate: ISO9001-2008
- Bolt Size: M10,M12,M16,M20
- Finish: EG
- Port: Shanghai
- Highlight: 1 4 stainless steel beam clamps,
1 2 beam clamps, 2 inch beam clamp



More Images



Our Product Introduction

for more products please visit us on channel-fittings.com

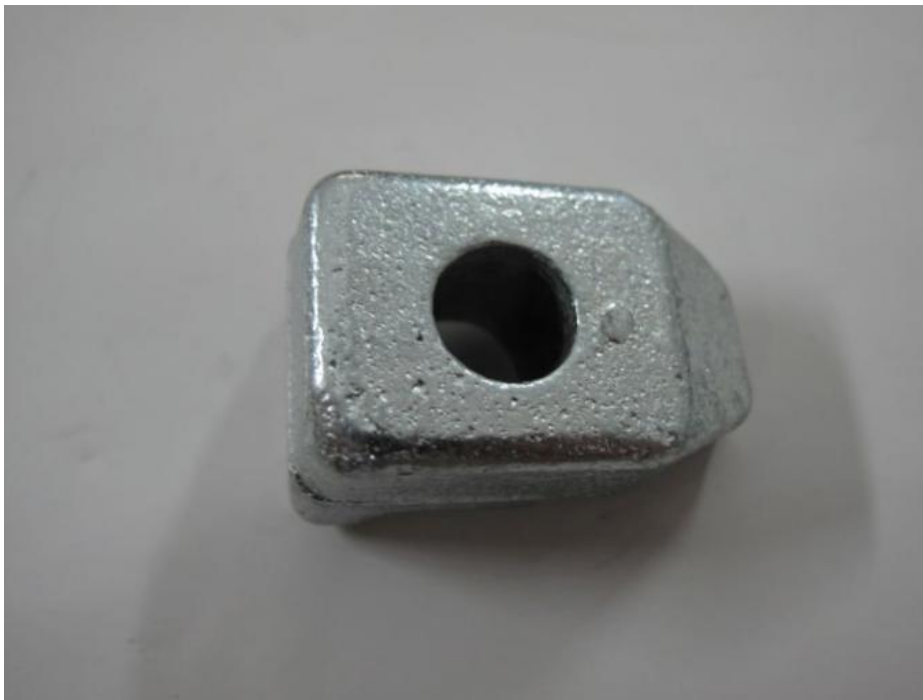
Beam clamps provide a cost-effective solution for attaching lighting fixtures, signage, and equipment brackets to beams.

Beam clamps are designed to securely grip beams, minimizing the risk of slippage or detachment.

Product Show:







Hengtong's advantages:

1. we can do the designs according to the customers' requirement
2. we can open the new mould as per customers' requirement
3. we can offer you the high quality & competitive price
4. we can offer your a good after-sale service .

Other services are consulted in dealing. Specifications and package could be customized

If you have any inquiry, please feel free to contact me and advise which exactly item(type) you need.

Company Information

Wuxi Hengtong Metal Framing System Co., Ltd(HENGTONG) is one of the well established firms in Wuxi for the past 20 years meeting the requirements of Pipe Supporting Systems. We have a good contact with domestic and foreign manufacturers and suppliers producing and supplying original branded pipe supporting materials. It provide kinds of quality and original products for clients. HENGTONG manufacture P41 series strut channels, U shape channels, angle steels, channel fittings, brackets, cantilever arms, beam clamps, pipe clamps etc. Our factory is located in Wuxi which is about 130km from Shanghai port, which is very convenient to deliver goods.



Why choose us?

1. Customized service is available according to the customers' requirement
2. OEM is available

3. High quality & competitive price

4. Good after-sale service

Packaging & Shipping

Material in stock can be produced (procedure 5-20days) right away after pre-payment confirmation. COSCO Mearsk MSCship to worldwide for safe shipping, don't worry about package damage or loss. It takes about 15-40 days to worldwide, Please note us your contact details include your phone number for easy contacting from shipping company officer.

By sea	Shanghai port, Ningbo port or others
By air	Shanghai Pudong port
By express	DHL, TNT, FedEx, UPS etc



Business Card

Company: Wuxi Hengtong Metal Framing System Co., Ltd
Address: No.19 Nanhu Road, Nanquan Town, Wuxi 214128, China
Contact: Vicky
Mob: +86-138 1228 2938
Tel: +86-510-6878 3383
Fax: +86-510-68783390
Web: <http://www.htstrut.com>



Wuxi Hengtong Metal Framing System Co., Ltd.



+86 15251535252



elinglu@htstrut.com



channel-fittings.com

No 6 East Dingxiang Road Hudai Industry Zone Wuxi City 214161 China