



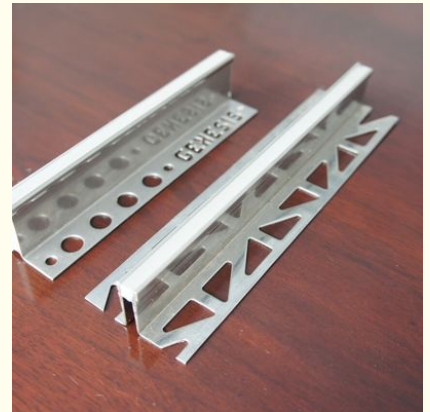
Custom Stainless Steel Trim Ceramic Tile Trim Corner Edge 90 Degree 10mm 12mm

Our Product Introduction

for more products please visit us on channel-fittings.com

Basic Information

- Place of Origin: Jiangsu, China
- Brand Name: HENG TONG
- Model Number: Square
- Minimum Order Quantity: 100 pieces
- Price: \$3.50 - \$16.50/pieces
- Packaging Details: 10 pcs packed in one carton, cartons packed in wooden crate with plastic protective film
- Supply Ability: 50000 Piece/Pieces per Month

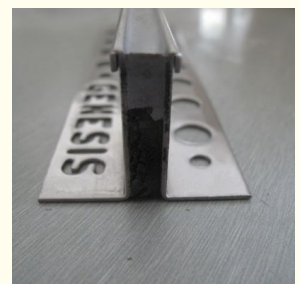
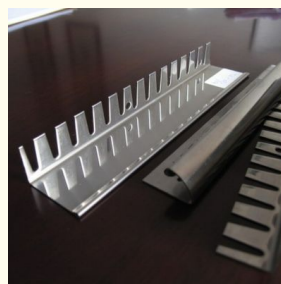


Product Specification

- Material: Metal
- Tile Accessory Type: Tile Trims
- Type: Tile Accessories
- Port: Shanghai, Ningbo, Huangpu, Qingdao Etc
- Highlight: **stainless steel 90 degree trim,
stainless steel tile trim 10mm,
stainless steel tile trim 12mm**



More Images



Product Description

ceramic tile trim corner edge

The trim can be used to create a distinctive and contemporary look for exterior building facades, adding visual interest and durability.

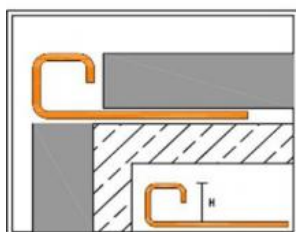
It is commonly used in the aviation industry for its lightweight properties and resistance to corrosion, making it suitable for aircraft interiors and exteriors.

The trim can be used to create custom railing systems for balconies, staircases, and decks, providing both safety and aesthetic appeal.

Product Description



Name	ceramic tile trim corner edge
Material	304 or 316 Stainless steel
Place of origin	Wuxi, China
Port	Shanghai, Ningbo, Huangpu or as per your requirements
Length	2.5m, 3m or customized
Thickness	0.9mm/1.2mm/1.5mm
Height	6mm, 8mm, 10mm, 12 mm, 15mm and so on...
Punching hole shape	Round, Triangle, Saw tooth or Customized
Surface treatment	Normal, Polished, Hairline
Features	1. Simple and easy for installation; 2. Attractive and elegant looking; 3. Nice straightness and smoothness; 4. High corrosion resistance, high weather resistance and good wear resistance
Application	Protecting edge of ceramic tiles, flooring stair decoration used in hotel, club, bathroom, shopping mall etc.
Packing	10pcs in one carton box, cartons are packed in wooden crate
Lead time	Normally 15-30 days after receiving deposit
Payment term	30% T/T in advance, balance within 5 days against B/L copy.
Remark	OEM service is available, design service offered



Square Edge Profile

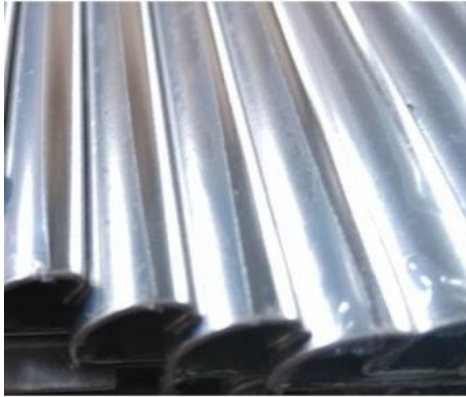
right-angled finishing and edge-protection profile for the outside corners of tiled surfaces



Package & Shipping



PROTECTIVE FILM



PAPER FILM



LABEL

wxhtdl.en.alibaba.com

WOODEN CRATE



More Products



You can try Trade Assurance, you'll enjoy:

100% product quality protection

100% on-time shipment protection

100% payment protection for your covered amount



Company Information

Wuxi Hengtong Metal Framing System Co., Ltd(HENG TONG) is one of the well established firms in Wuxi for the past 20 years meeting the requirements of Pipe Supporting Systems. We have a good contact with domestic and foreign manufacturers and suppliers producing and supplying original branded pipe supporting materials. It provide kinds of quality and original products for clients. HENG TONG manufacture P41 series strut channels, U shape channels, angle steels, channel fittings, brackets, cantilever arms, beam clamps, pipe clamps etc. Our factory is located in Wuxi which is about 130km from Shanghai port, which is very convenient to deliver goods.



Why choose us?

1. Customized service is available according to the customers' requirement
2. OEM is available
3. High quality & competitive price
4. Good after-sale service

Packaging & Shipping

Material in stock can be produced (procedure 5-20days) right away after pre-payment confirmation. COSCO Mearsk MSCship to worldwide for safe shipping, don't worry about package damage or loss. It takes about 15-40 days to worldwide, Please note us your contact details include your phone number for easy contacting from shipping company officer.

By sea	Shanghai port, Ningbo port or others
By air	Shanghai Pudong port
By express	DHL, TNT, FedEx, UPS etc



Business Card

Company: Wuxi Hengtong Metal Framing System Co., Ltd
 Address: No.19 Nanhu Road, Nanquan Town, Wuxi 214128, China
 Contact: Vicky
 Mob: +86-138 1228 2938
 Tel: +86-510-6878 3383
 Fax: +86-510-68783390
 Web: <http://www.htstrut.com>



Wuxi Hengtong Metal Framing System Co., Ltd.



+86 15251535252



elinglu@htstrut.com



channel-fittings.com

No 6 East Dingxiang Road Hudai Industry Zone Wuxi City 214161 China